



Ridge Creek Fire



Idaho Panhandle National Forests, Coeur d'Alene River

Ranger District

Fire Information 208-953-7022

Media Information 989-292-9373

2023.ridgecreek@firenet.gov

<https://inciweb.nwcg.gov/incident-information/idipf-ridge-creek>

August 18, 2023

Location: Approximately 3.5 miles east of the north tip of Hayden Lake, along the Hayden Creek Road (FSR 437) in the Ridge Creek drainage.

Start Date: 8/3/2023 **Cause:** Human/Under Investigation **Size:** 3,248 acres **Containment:** 12%

Total Personnel: 484 **Engines:** 17 **Heavy Equipment:** 8 **Crews:** 11

A Red Flag Fire Weather Warning continues today for the Idaho panhandle, including the Ridge Creek Fire area (www.weather.gov/wrh/fire?wfo=otx&LAT=48.0512&LON=-116.4660). Critical fire weather conditions will occur over the fire that will be characterized by high temperatures, low relative humidity, and wind.

Temperatures will moderate today reaching the mid-80s, but relative humidity will drop to the mid-teens, with winds from 15-20 mph predominantly out of the southwest. Wind gusts of 35 mph may occur over the area of the fire today. This will produce active fire behavior and smoke.

Structure assessment staff will be working in the Mokins Bay area, completing assessments that will inform the development of an area structure protection plan in cooperation with local agencies. Structure protection plans stay with local agencies after an incident is over.

FIRE STATUS

An infrared flight was not conducted over the fire last night due to cloud cover and smoke which limits the effectiveness of the technology. Consequently, there has been no change to the estimated acreage or containment of the fire. The Ridge Creek Fire is currently estimated at 3,248 acres and 12% containment, which is reflected on the enclosed maps. Despite challenging conditions yesterday and last night, crews were able to hold and strengthen firelines. A spot fire in the northern area of the fire was contained. Firing operations yesterday were used to strengthen fireline on the southeast flank of the fire. Crews will continue the effort to bring a strengthened fireline from the Hudlow Saddle area southward along FSR 406. Firing operations, particularly at night when conditions moderate, will continue as conditions allow to remove shrub and surface layer fuels, reinforcing existing containment lines.

With the Red Flag Warning issued for the Ridge Creek Fire area, crews anticipate that they will meet active fire behavior today accompanied by visible smoke. Operational staff foresee the use of aircraft again today, particularly in the northeast area of the fire. A night shift of engines will continue to be used to patrol the perimeter of the fire to monitor fire behavior.

WEATHER AND FIRE BEHAVIOR

A Red Flag Warning has been issued by the National Weather Service for much of the Idaho panhandle area and northeastern Washington State for 10 AM to 9 PM today, Friday, August 18th. This designation means conditions are predicted to increase the risk of wildfire activity and growth. Temperatures will reach the mid-80s at mid-slope elevations, with 18 mph winds out of the west/southwest gusting up to 35 mph, which will tend to push the fire to the northeast. Relative humidity will drop below 20%, with overnight recovery of 45%. Smoke from the Ridge Creek Fire is likely to be both visible and may be compounded by smoke from another wildfire burning in Canada. Air quality information is available at www.airnow.gov and www.wildlandfiresmoke.net.

EVACUATION STATUS

The Kootenai County Office of Emergency Management has issued an alert to inform residents of the identification of **READY, SET, GO** areas in the vicinity of the Bunco Road and Hayden Lake. In this status, residents are cautioned to heighten their awareness of fire information, be familiar with evacuation procedures should it become necessary, and consistently adhere to good fire prevention measures.

The Kootenai Office of Emergency Management provides the following direction for residents in these areas designated with a **GET READY** status: "Please continue to monitor official sources and call 208-446-2292 for any questions regarding evacuations. Follow Kootenai County Emergency Management Facebook Page for updates and sign up for automated Kootenai Alert for emergency alerts. <https://www.kcsheriff.com/186/Emergency-Management>."

A map of the revised **GET READY** areas is included with this update below.

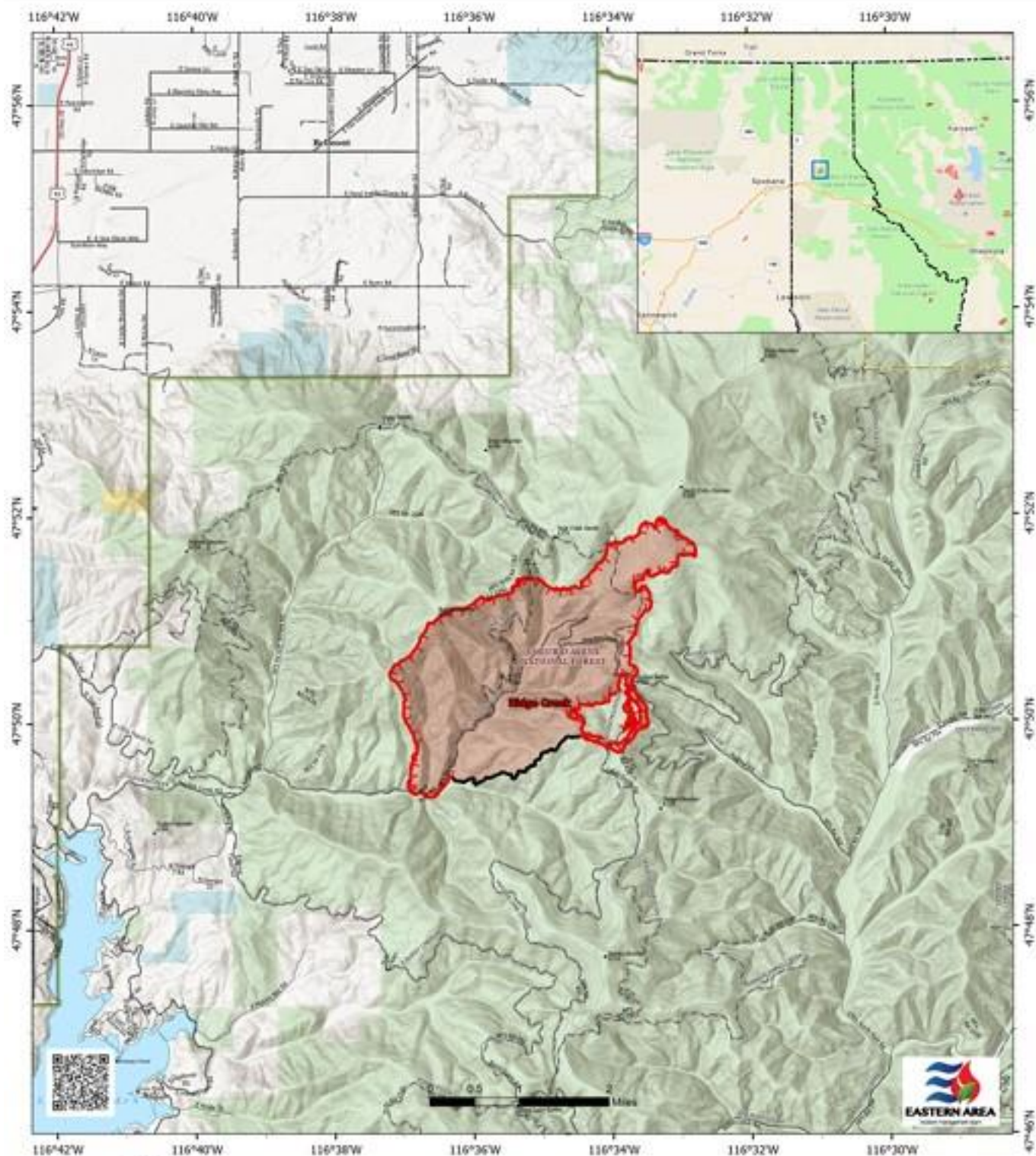
CLOSURES AND SPECIAL MESSAGES

There is a 24-hour per day Temporary Flight Restriction (TFR) in place for the Ridge Creek Fire to prevent incursion of civilian aircraft into the area used by fire-fighting aircraft. This restriction also applies to the use of drones in the TFR area.

Firefighting aircraft are shared resources among numerous fires within the region, including the Ridge Creek Fire. These aircraft will continue to use area waterways, including Hayden Lake, for fire suppression efforts. This means that residents and recreational boaters are likely to see either helicopters or fixed-wing aircraft using the lake. For planes in particular, this requires a long, linear approach and exit from the lake. This restricts their ability to maneuver abruptly should watercraft be within their flight path, creating a serious safety hazard for both boaters and pilots. **The Ridge Creek Fire has a substantial fleet of aircraft available to support ground operations. Expect to see both fixed-wing aircraft and helicopters working, particularly on the northeast area of the fire. Again, if you are a recreational boater and you observe aircraft using either Lake Hayden or Lake Pend Oreille, you should restrict your activities to the shore area of the lakes.**

The Coeur d'Alene Dispatch Zone has issued Stage II Fire Restrictions across the Idaho panhandle. The entirety of Kootenai County is within the Stage II Fire Restrictions area. An infographic is included with this update that details the activities that are prohibited under the restriction.

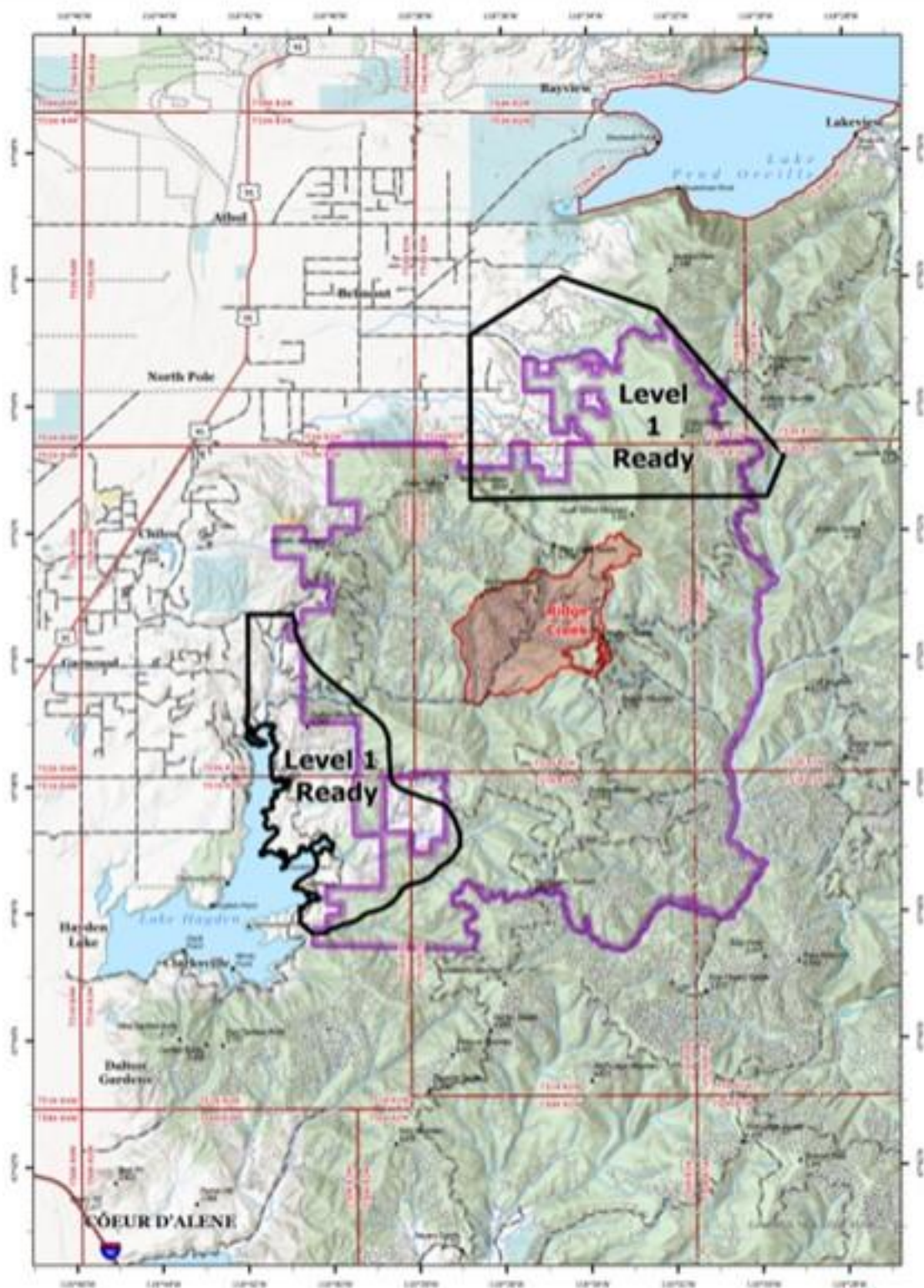
The Idaho Panhandle National Forests issued an emergency closure (Closure Order #01-04-03-23-002) effective August 4, 2023. This Order is for public and firefighter safety due to heavy fire traffic on the area impacted on the Coeur d'Alene River Ranger District, and prohibits all methods of travel (foot, mechanized, motorized and stock) on Forest Service Roads 392, 428A, 437, 1511, 1530, 1552, 1587 and Forest Service Roads 206 and 406 north of their junction, Forest Service Trails 69, 78, 234, and 802 as well as within the described area.



PIO
RIDGE CREEK
IDIPF000447
08/18/2023 Day
 3,248 acres at 8/18/2023 2037 hrs
 Acres from IR
 North American 1983 Datum, Lambert Conformal



- Bureau of Land Management (BLM)
- State
- US Forest Service (USFS)
- National Forest
- Wildfire Daily Fire Perimeter



PIO
 Ready, Set, Go and Closures
 RIDGE CREEK
 IDIPF000447
 06/18/2023 Day

0.248 acres as of 01/10/2023 2027 Year
 Access Point: 04
 North Arrow: 1957 (Scale: 1:50,000)

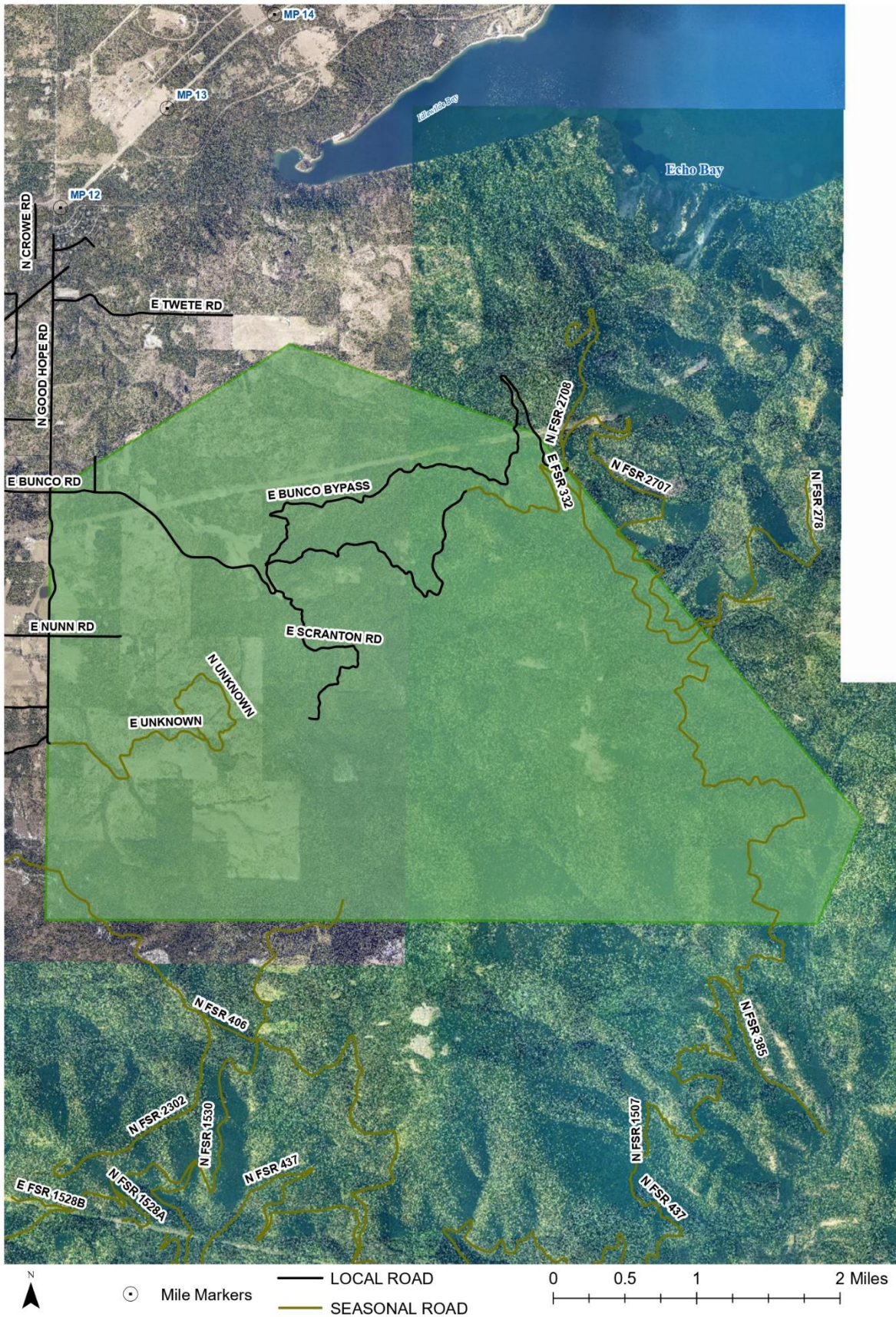




Ridge Creek Fire - Bunco

Kootenai County
August 8th, 2023

Level 1: Get Ready

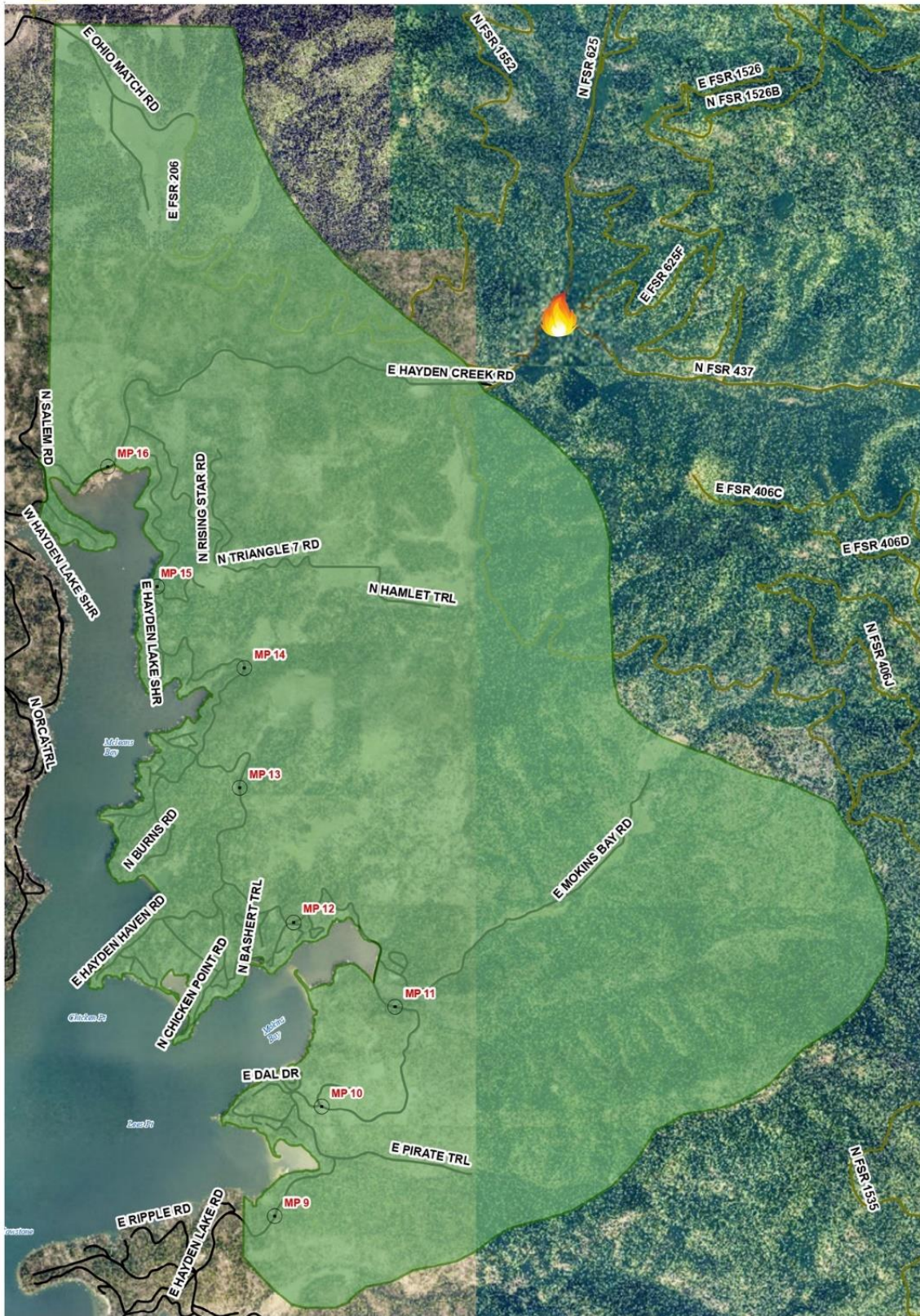




Ridge Creek Fire

Level 1: Get Ready

Kootenai County
August 4th, 2023



○ Mile Markers
— LOCAL ROAD
— SEASONAL ROAD

0 0.25 0.5 1 Miles



Idaho Panhandle National Forests



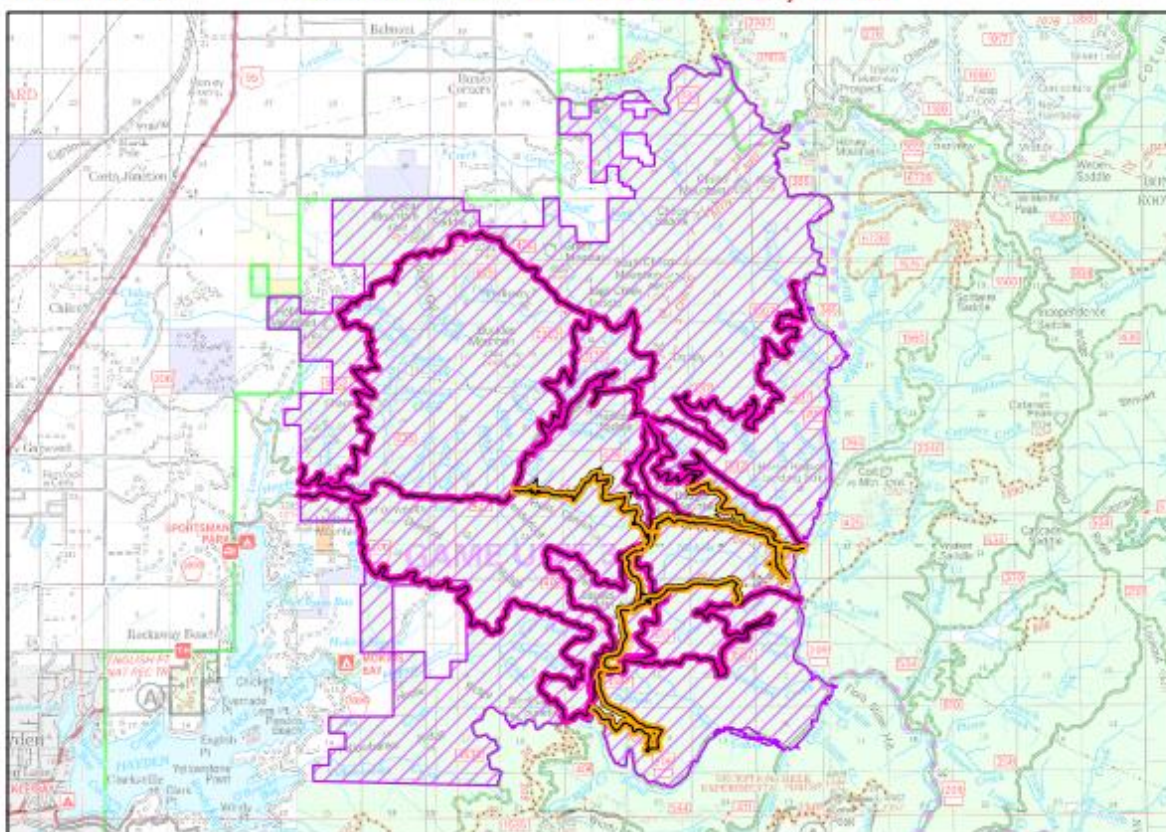
Forest Closure: Ridge Creek Fire Closure

Order Number: 01-04-03-23-002

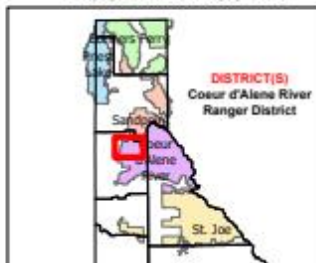
Effective Date : AUGUST 4th, 2023

Rescind Date : SEPTEMBER 30th, 2023

Exhibit A



IDAHO KOOTENAI COUNTY



Closed Road Numbers:

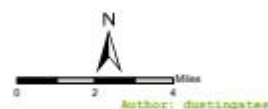
-206
-392
-406
-428A
-437
-1511
-1530
-1552
-1587

Closed Trail Numbers:

-69
-78
-234
-802

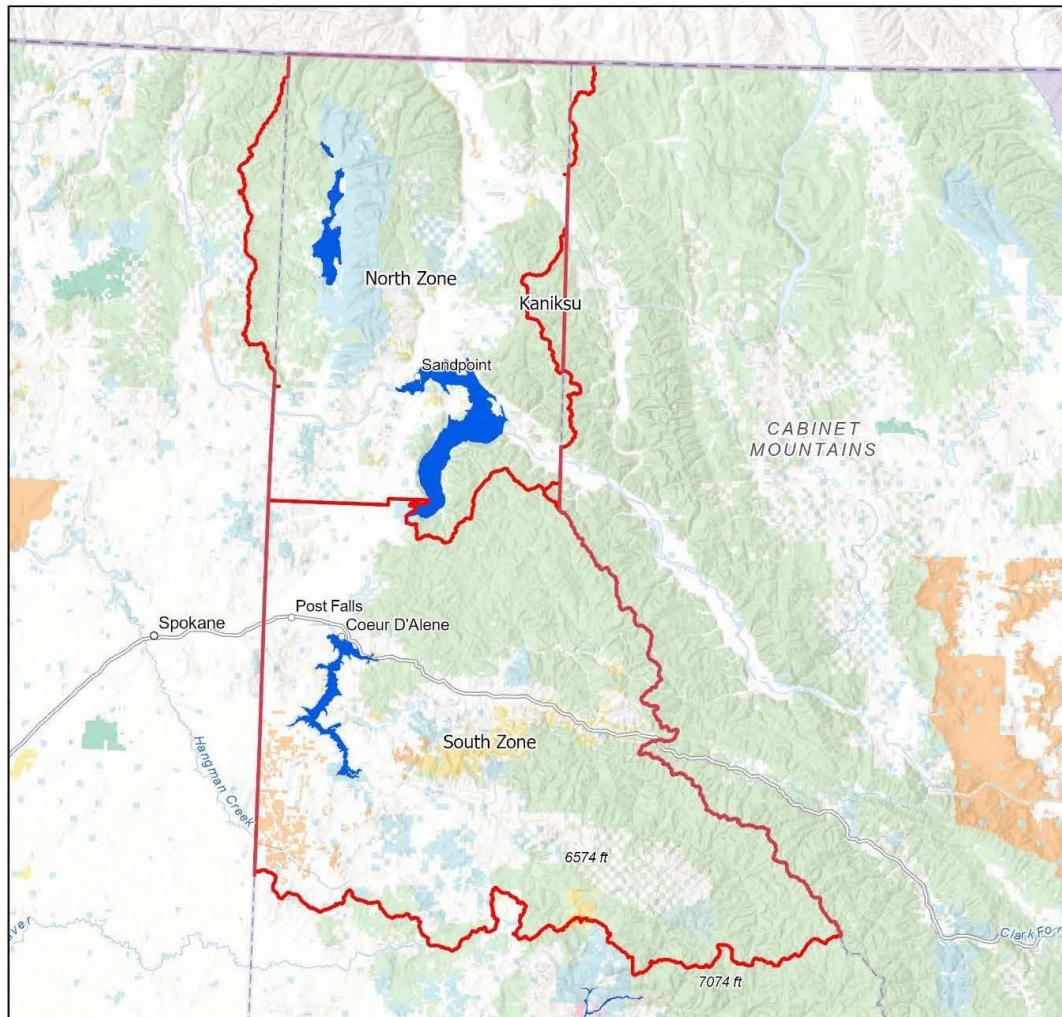
Closures

- Road
- Trail
- Area



Coeur d'Alene

Fire Restriction Areas



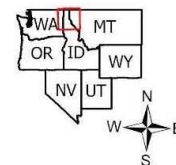
Date Created:
05/18/2022

The surface management status should be used as a general guide only. Official lands records at the Bureau of Land Management (BLM) and other State and County offices should be checked for up-to-date information regarding any specific tract of lands.

No warranty is made by the Idaho Department of Lands (IDL) as to the accuracy, reliability, or completeness of these datasets for individual use or aggregation with other datasets.

Spatial Reference
Name: WGS 1984 Web Mercator Auxiliary Sphere

0 5 10 20 30 40 Miles



FIRE RESTRICTIONS



STAGE II RESTRICTIONS are in effect and **prohibit** the following:



FIRES OR CHARCOAL

Prohibited: Building, maintaining, attending or using a fire, campfire, or stove fire.

Exceptions: Persons using a fire or stove fire fueled solely by liquid petroleum or LPG fuels. Such devices, including propane campfires, may be used only in an area **clear of flammable material**.



SMOKING

Prohibited: Smoking outside an enclosed vehicle or building.

Exceptions: You can smoke while stopped in an area at least 3 feet in diameter that is barren or **cleared of all flammable materials**.



Cross Country Travel

Prohibited: Operating motorized vehicles off designated roads and trails.



Chainsaws/Other Equipment

Prohibited: The following acts are prohibited from 1:00 p.m. to 1:00 a.m. - Operating a chainsaw or other equipment powered by an internal combustion engine; blasting, welding, or other activities that generate flame or flammable material; or using an explosive.

Remember – Fireworks are illegal on federal public lands.



For more information contact your local fire agency